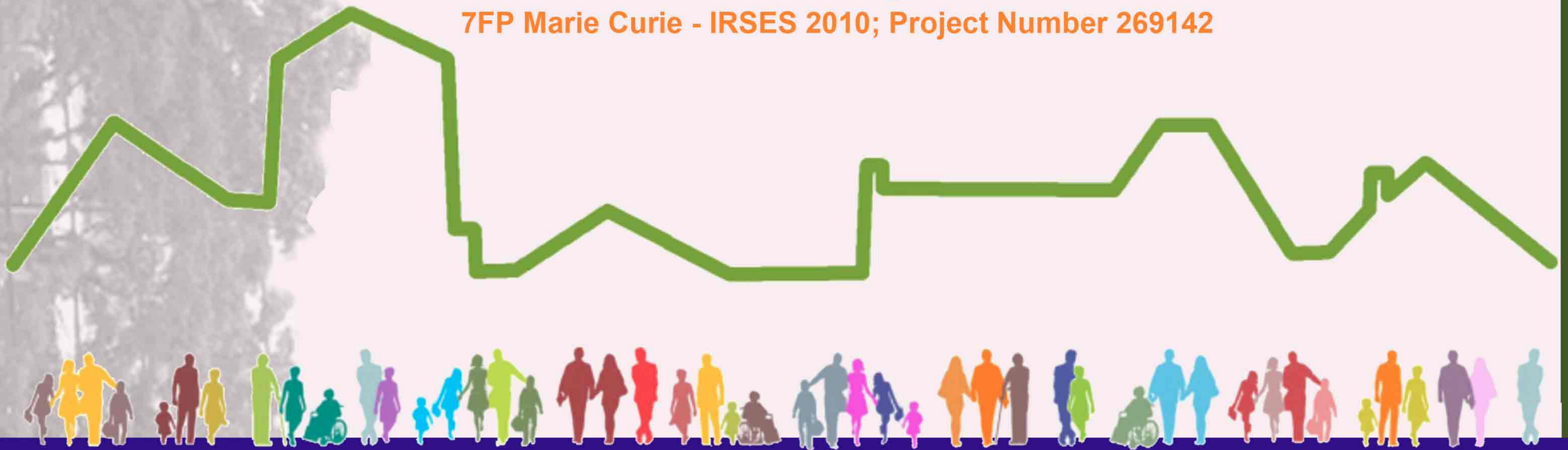


Second Midterm Meeting of CLUDs Project

San Diego State University - (San Diego, CA)
Host Partner Organisation

7FP Marie Curie - IRSES 2010; Project Number 269142



22nd - 27th August 2012

Urban Management Tool



Date: 22nd August 2012
Location: SDSU-School of Public Policy and Urban Affair

09.30 am - 10.00 am
Greetings from San Diego State University representatives by **Stuart Henry and Sherry Ryan** (host partner)
Opening and timetable of the meeting, project overview by **Carmelina Bevilacqua** (Coordinator)
Presentation and discussion of the San Diego State University team by **Sherry Ryan and Nico Calavita** (host partner)

10.00 am - 12.00 am
Presentation of the preliminary studies on WP2
Methodology for the preliminary studies: **Claudia Trillo and Ali Parsa**
Preliminary literature review: **Malawi Ngwira**
Preliminary study on the farmer markets in the San Diego region: **Erik Bichard**
Preliminary study on the pilot case studies on urban regeneration: **Samuel Wapwera**

12.00 am - 01.00 pm
Lunch break

01.00 pm - 04.00 pm
Discussion on the specification of variables for the research topics of WP2, also drawing from the pilot case studies: *Urban milieu vs. Territorial milieu as source of local development*
Chair: **Sherry Ryan**
Unit of Reggio Calabria (IT): Carmelina Bevilacqua, Gabriella Esposito
Unit of Salford (UK): Ali Parsa, Erik Bichard, Claudia Trillo, Samuel Wapwera, Malawi Ngwira
Unit of San Diego (USA, CA): Nico Calavita, Mounah Abdel-Samad, Stuart Henry
Unit of Northeastern (USA, MA): Gregory Wassall, Alan W. Dyer.

Urban Rural Link



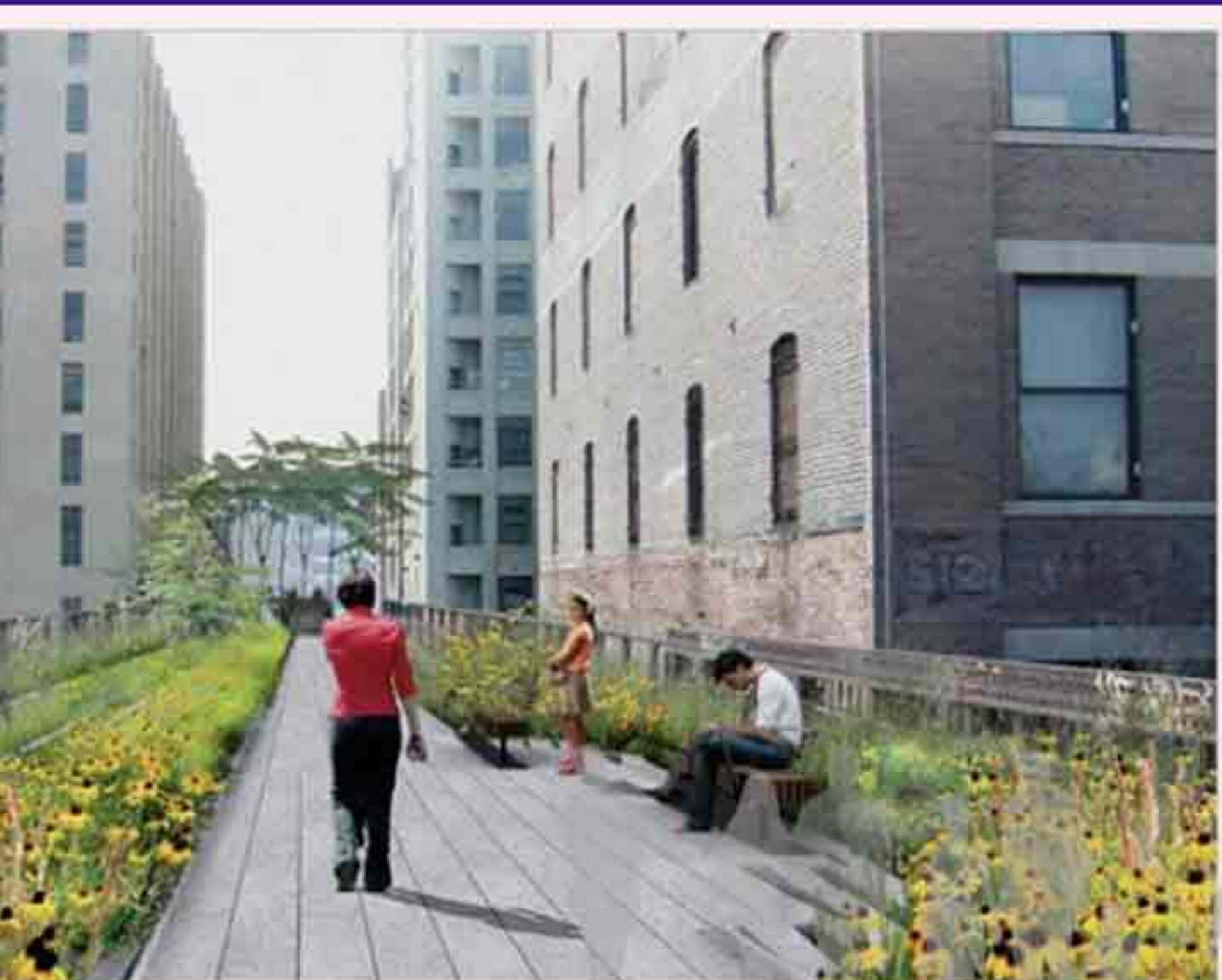
Date: 23rd August 2012
Location: SDSU-School of Public Policy and Urban Affair

9.30 am.- 12.00 am
Presentation of a proposal of a possible specification of WP2 deliverables:
D2.1: Update midterm evaluation report on particular aspects: *Urban-Regional rationale and Community planning with respect to the CLUDs model*; D2.2: Workshop report - *The CLUDs model*: **Carmelina Bevilacqua**
Discussion on the proposal and round table on the specification of an analytical framework for the WP2 case studies
Chair: **Sherry Ryan**
Unit of Reggio Calabria (IT): Carmelina Bevilacqua, Gabriella Esposito
Unit of Salford (UK): Ali Parsa, Erik Bichard, Claudia Trillo, Samuel Wapwera, Malawi Ngwira
Unit of Aalto (FI): Christer Bengs
Unit of San Diego (USA, CA): Nico Calavita, Mounah Abdel-Samad, Stuart Henry
Unit of Northeastern (USA, MA): Gregory Wassall, Alan W. Dyer.

12.00 am - 01.00 pm
Lunch break

01.00 am - 04.00 pm
Presentation of the case studies list: elaborated by the SDSU unit also drawing from the preliminary studies.
Discussion on the proposal of case studies list
Chair: **Sherry Ryan**

Action Local Plan



Location: SDSU-School of Public Policy and Urban Affair
TBC. International meeting on the follow up of the midterm report

Date: 27th August 2012
Location: SDSU-School of Public Policy and Urban Affair

9.30 am.- 12.00 am
Round table on the WP2 literature review and case studies: *distribution of tasks among all partners throughout the WP2* - Chair: **Sherry Ryan**

01.00am - 04.00 pm
Round table on administrative aspects - Chair: **Carmelina Bevilacqua**